



# NORTHLIGHT

EDGE-ON-HUDSON

## A3 BALCONY

1 BED | 1 BATH

673 SQ. FT.

---

APARTMENT

---

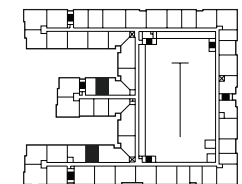
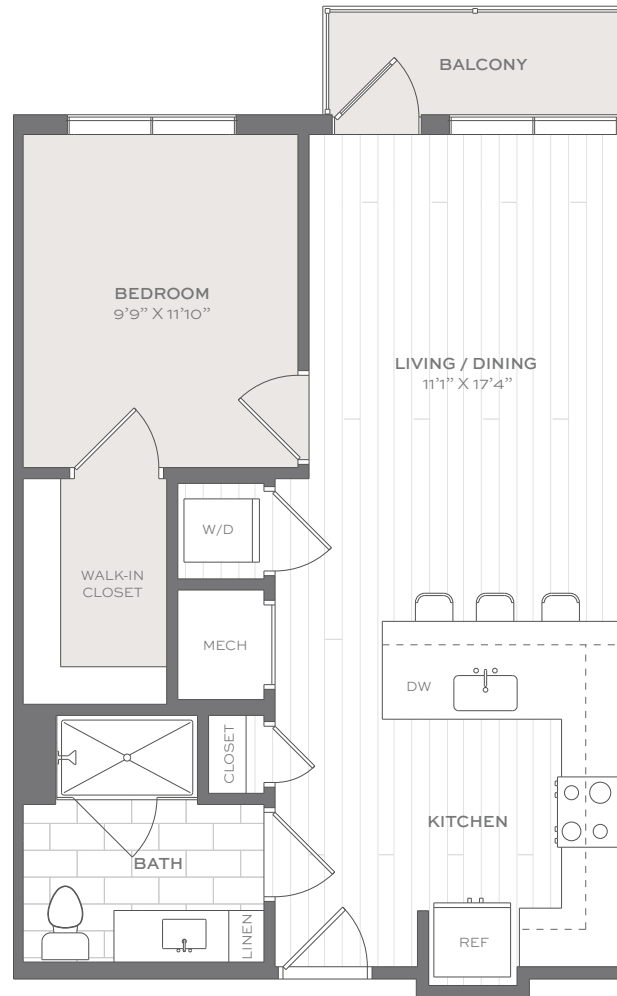
RENT

---

DATE AVAILABLE

2 MAXWELL DRIVE  
SLEEPY HOLLOW, NY 10591

914-502-4393  
NorthLightSleepyHollow.com



Elevations and floor plans are artist's renderings and are shown for illustration purposes only. All square feet are approximate only. Pricing is subject to change.