



NORTHLIGHT

EDGE-ON-HUDSON

A1 BALCONY

1 BED | 1 BATH

780 SQ. FT.

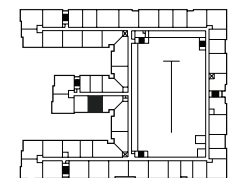
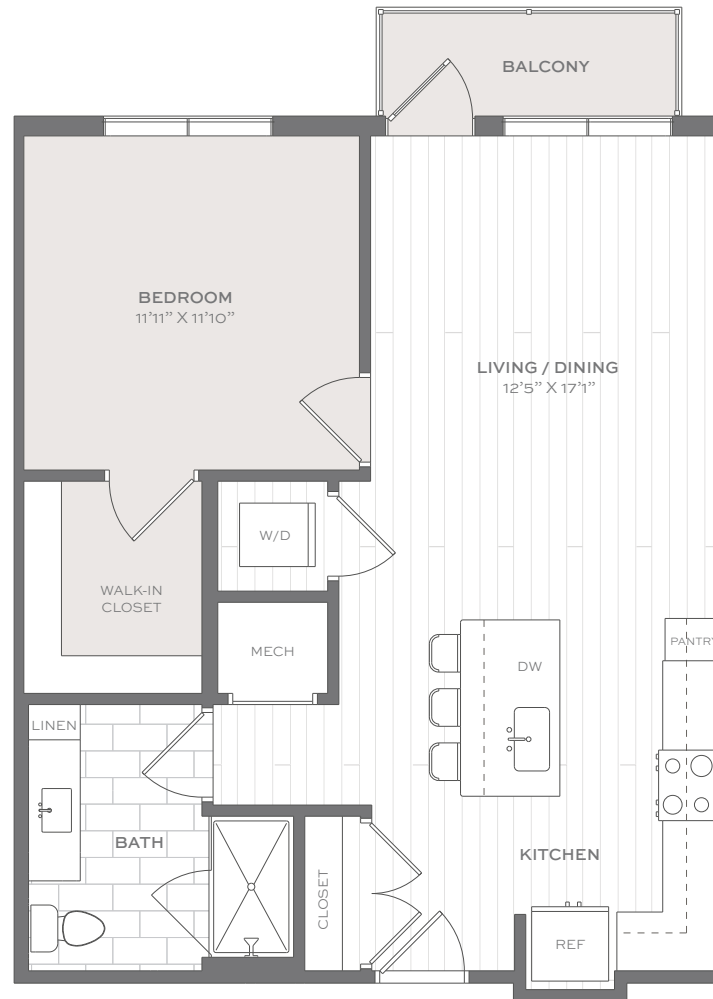
APARTMENT

RENT

DATE AVAILABLE

2 MAXWELL DRIVE
SLEEPY HOLLOW, NY 10591

914-502-4393
NorthLightSleepyHollow.com



Elevations and floor plans are artist's renderings and are shown for illustration purposes only. All square feet are approximate only. Pricing is subject to change.